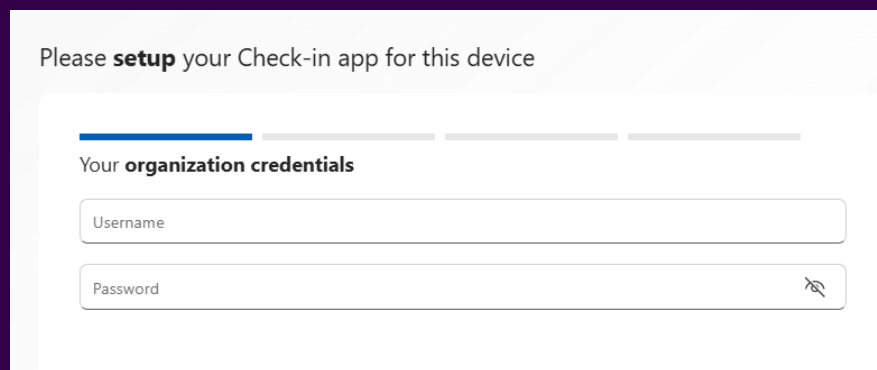


## Guide

# Check-in web app

Browse to this URL: <https://precisevisit.com/check-in/onboarding>

Type in the username and password provided from Precise Biometrics to log in to your company's Online account



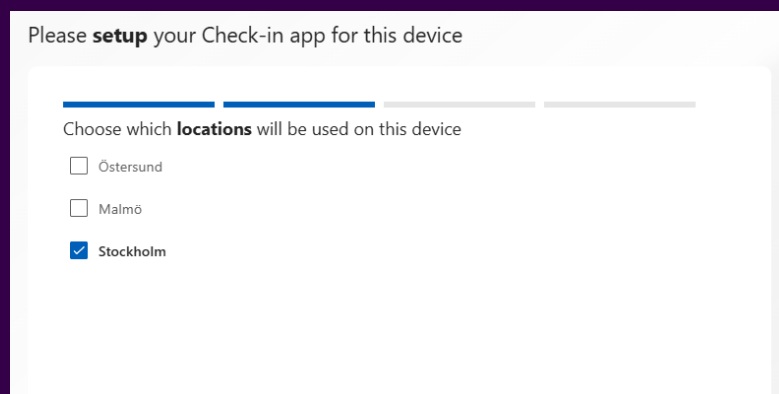
Please **setup** your Check-in app for this device

Your **organization credentials**

Username

Password

## Choose the correct location



Please **setup** your Check-in app for this device

Choose which **locations** will be used on this device

Östersund

Malmö

Stockholm

To set up a name for the device to be used from Dashboard

Please **setup** your Check-in app for this device

Enter this **device name** that will be used in the system

To connect a printer.

There is now only supported to connect a Zebra Printer by using a small program from them. The program is old but it working wit Windows 11 and newer versions of Zebra Printers.

## Printer

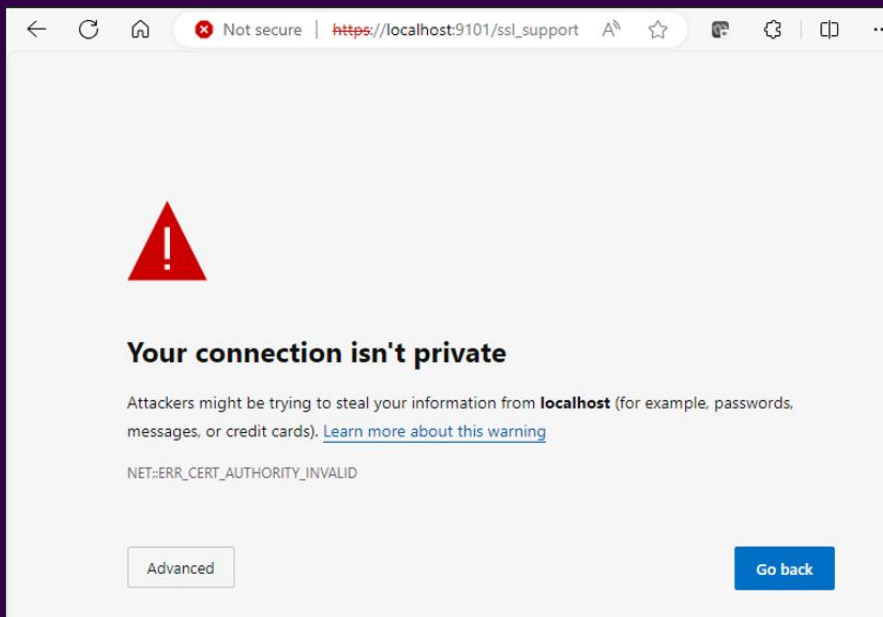
**i** To be able to find your Zebra printer in the list you will need to connect it first with the Zebra native app using Network or USB connection.  
[Download and install Zebra native app for your platform](#)

Applications are available and supported on the following platforms: Windows 7 or later, MacOS Yosemite or later, Android 7.0 or later

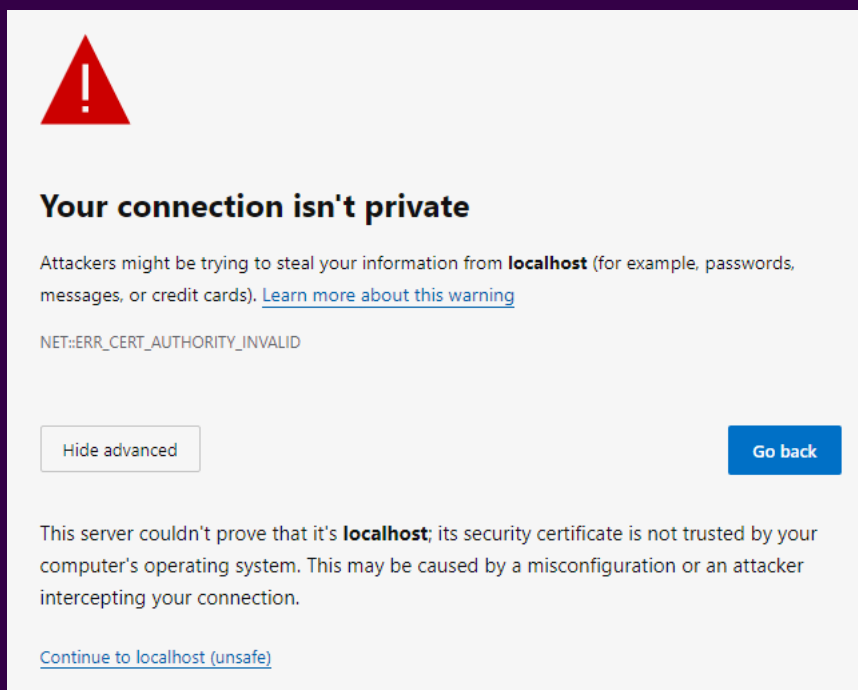
Choose available Zebra printer from the list Refresh

Download and install the Zebra app

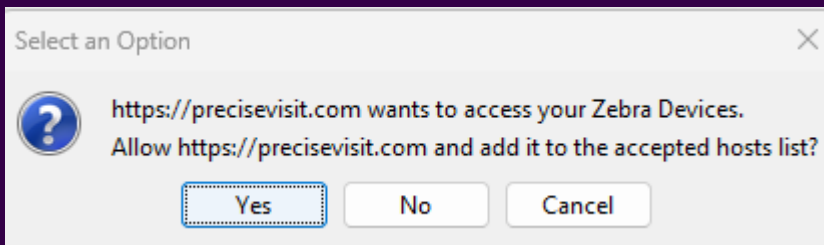
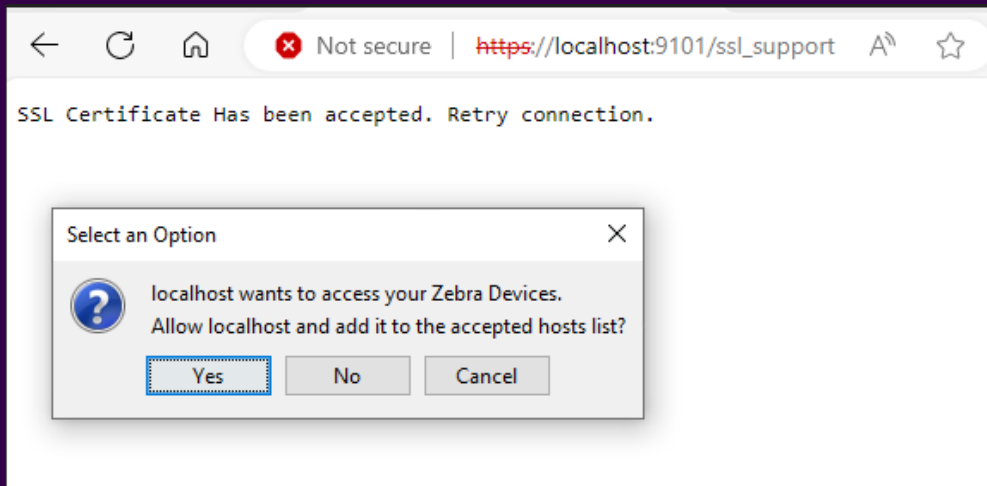
When installing you get some warnings that you must accept



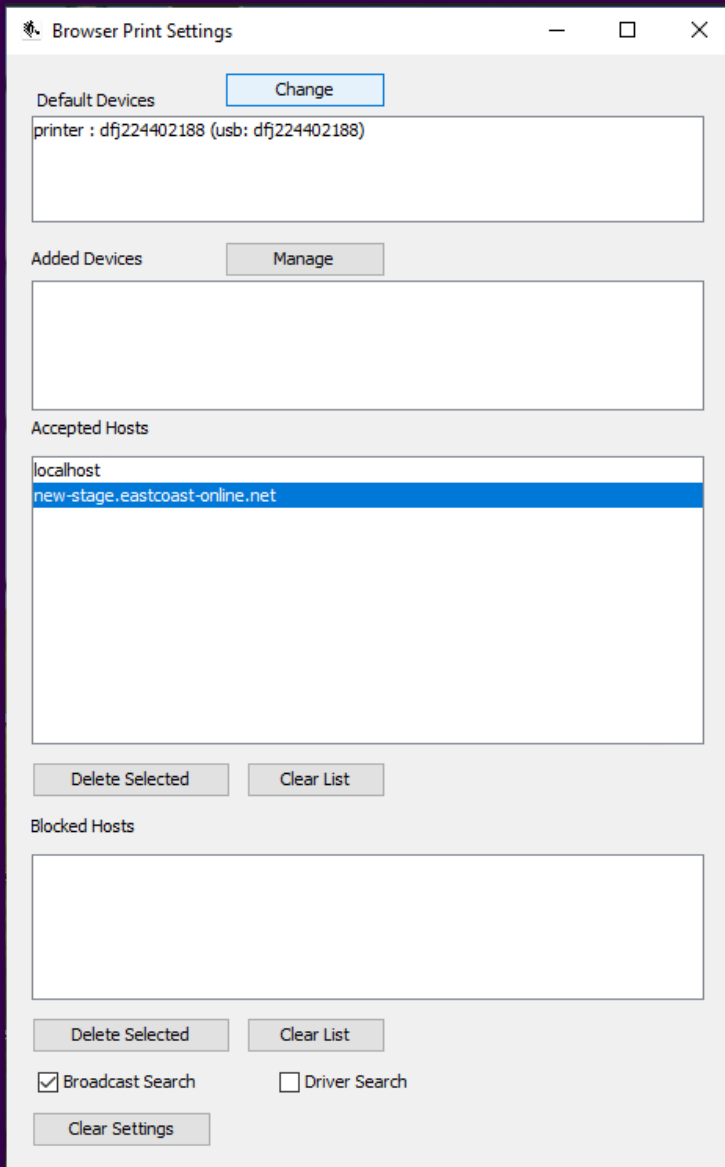
Click Advanced



Click "Continue to localhost (unsafe)"



To find connected Zebra printers click "Change" and select the correct printer



"C:\Program Files (x86)\Microsoft\Edge\Application\msedge.exe" --kiosk  
[www.eastcoast-online.net/check-in](http://www.eastcoast-online.net/check-in)